

PROPOSAL FOR:

DESCRIPTION: M5 x 0.8 x 11.5MM TORX® FLAT HEAD W/SHOULDER TAPTITE 2000® SCREW

CUSTOMER PART NUMBER:

MATERIAL: 1022 STEEL, CASE HARDEN TO SURFACE HARDNESS 45 RC MIN, CORE HARDNESS 28-36 RC, CASE DEPTH 1.27- 4.57 PER MS-4514

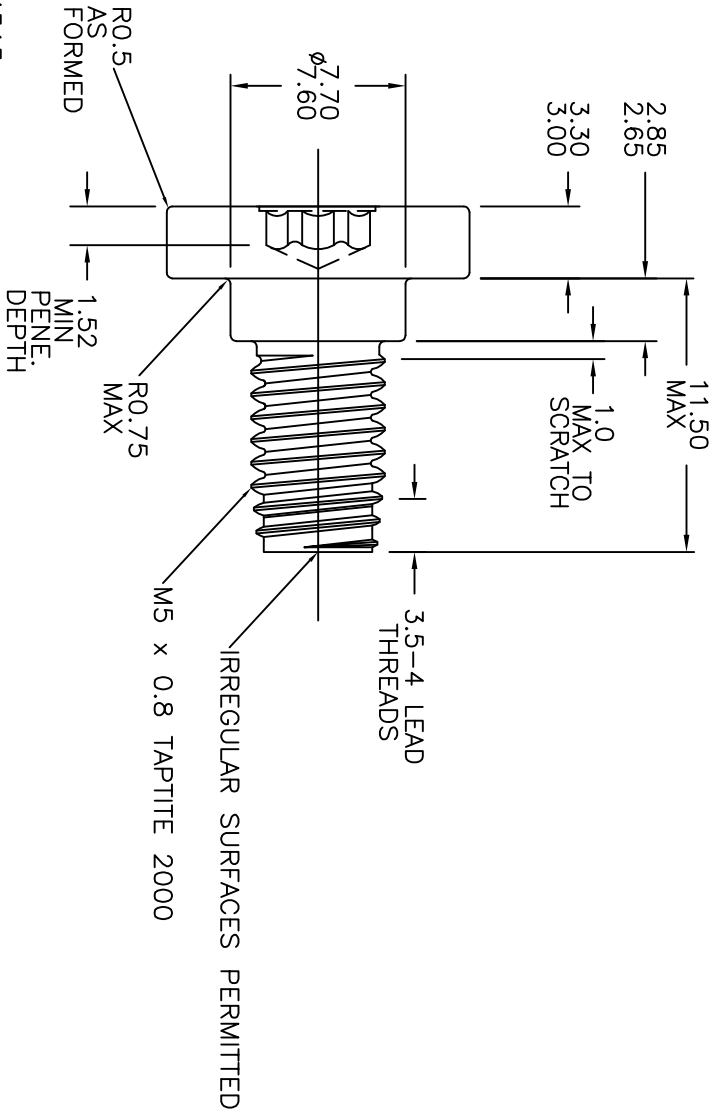
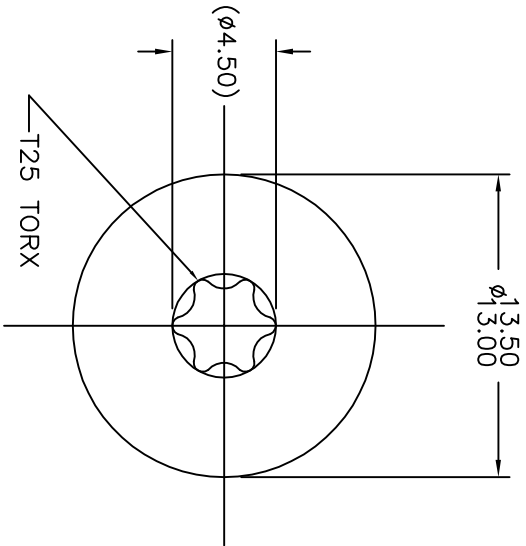
FINISH: ZINC PHOSPHATE, BLACK CATHODIC E-COAT, NO RUST PREVENTIVE OIL PER PS-7902 C

ATF PART NUMBER:

REV DESCRIPTION

-

BY DATE



- NOTES:
1. MECHANICAL PROPERTIES TO CONFORM TO MS-4515
  2. UNSPECIFIED DETAILS PER CHRYSLER ENGINEERING STANDARDS
  3. RESTRICTED AND REPORTABLE SUBSTANCES FOR PARTS PER CS-9003

NOTE: PARTS TO CONFORM TO ASTM F788/F788M-08

CUSTOMER SIGNATURE:

THIS PRINT AND THE DESIGN THEREON IS THE PROPERTY OF ATF, INC. THE INFORMATION DISCLOSED IS TO BE KEPT IN CONFIDENCE AND NOT DUPLICATED OR GIVEN TO OTHERS WITHOUT THE WRITTEN PERMISSION OF ATF, INC

DRAWN BY: CAM DATE: 1/6/16

CHECKED BY: TOK DATE: 1/8/16

SIGNED DATE:

CAD DRAWING, NO MANUAL CHANGES ALLOWED

PLOT DATE: 6/20/16

CAD FILE: P3027046



3550 W. PRAATT LINCOLNWOOD, IL